



AMMATTIKORKEAKOULU

University of Applied Sciences



Welcome to Study Correctional Services!

Information on Education, Degree Structure and Competence Assessment

Group: SRV226KA

Content

Laurea's Mission	3
Competence Development	3
Learning by Developing (LbD)	4
Degree Structure.....	5
Scope and Extent of the Degree	5
Degree Structure	5
Degree Requirements.....	6
Degree Requirements Regarding Complementary Competence	8
Flexible Possibilities for Completing Attainments and Specialising	8
Assessment of Learning and Competence in the Bachelor's Degree Programme	9
International Comparability of the Degree	12
Curriculum Development	12

The purpose of this attachment to the curriculum is to provide you with basic information on the operating methods, degree structure and requirements as well as the assessment of competence and learning at Laurea and in the education. If you have additional questions, please contact your personal tutor or peer tutor.

Wishing you success in your studies!

Katri Ojasalo
Vice President (Education)

Laurea's Mission

Laurea is a student-centred, international, inspiring and innovative university of applied sciences. Our mission is to educate, research, develop and innovate. In our activities we apply the action model of Learning by Developing (LbD).

As a student you will encounter authentic workplace actors and your competence will be challenged during their studies. A student graduating from Laurea will be able to act in new situations, anticipate future trends, develop new operating models and examine the world with open eyes. Laurea's mission is to be an internationally networked university of applied sciences with an operating method that creates links between learning and the working life. This way, new competence will be produced and service innovations generated.

Competence Development

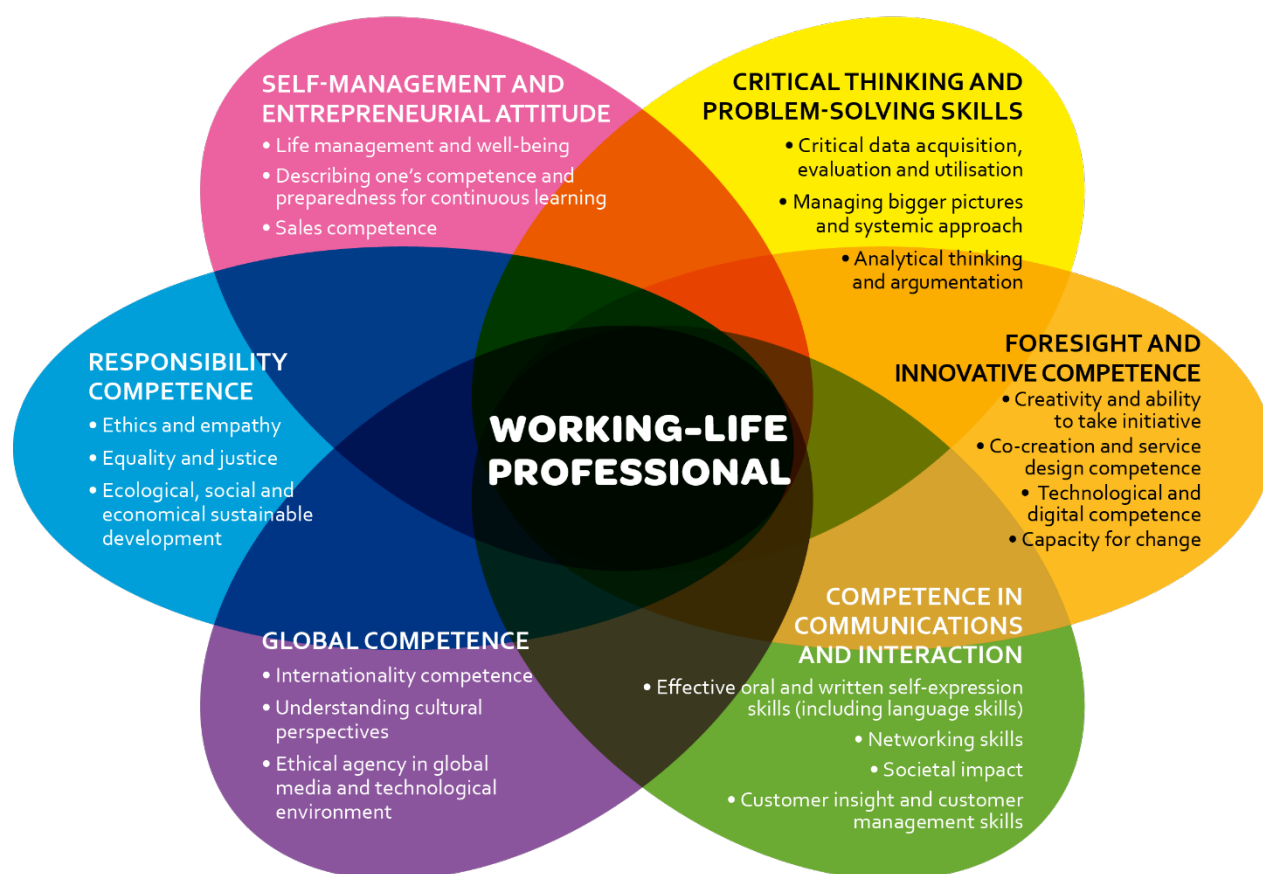
At Laurea our focus is on the student, which emphasize your freedom and responsibility. You are offered an opportunity to develop your competence to meet your own professional goals. Freedom means that the learning outcomes may be achieved through different modes of studying. Responsibility means an active approach to studying, responsibility for your own choices and a constructive and motivated attitude towards doing things together. Laurea's staff is responsible for supporting and guiding your professional growth.

Internationality at Laurea means numerous opportunities for being active in various multicultural settings, developing your language skills, going on student exchanges and taking part in international research and development (R&D) projects.

Laurea produces experts for the future who can develop their own work, are professionally committed and have capabilities for serving in expert tasks in their own fields.

The education aims for an extensive and strong professional competence. Workplace driven projects also develop generic working life competences (see picture 1). The graduates will have capabilities for

following and promoting the development of their professional fields and for continuous improvement of their personal professional competence. The education imparts the students adequate communication and linguistic skills for tasks in their fields as well as for international activities and cooperation.



Picture 1. Generic working-life competences common for all degree programmes.

Learning by Developing (LbD)

Laurea's inspiring and innovative learning environments are based on the model of Learning by Developing. The idea of Learning by Developing is built around authentic encounters with the working life. The ensuing cooperation is based on trust and creativity.

As a student you will learn to identify targets for workplace and competence development, to create new solutions, products and operating models and to develop your own action in observance of changing workplace requirements. The typical characteristics of LbD include authenticity, partnership, experiential nature, creativity and a research-oriented approach.

Learning by Developing combines learning that produces competence with creativity through various research and development projects and in cooperation with Laurea's key partners. The required competence is accumulated through practical activities in various workshops.

Degree Structure

Scope and Extent of the Degree

The scope of a Bachelor's degree in Social Services is 210 credits. It takes on average 3.5 years to complete.

In line with the international ECTS standard, one credit corresponds with 26.7 hours of work for an average student. In order to graduate in the targeted time, you should earn an average of 30 credits per semester.

Degree Structure

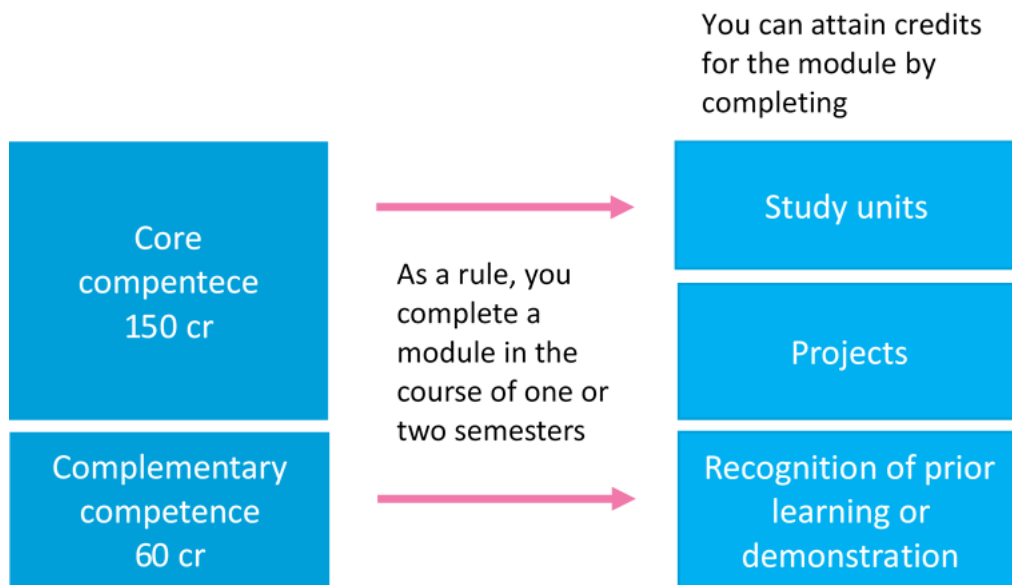
The degree studies at Laurea consists of core competence and complementary competence modules. The modules comprise competence areas that are part of the degree.

Core competence modules impart competence that is part of the degree's compulsory requirements. The scope of core competence modules is 30 credits. The modules contain the following types of studies: basic studies, professional studies, practical studies and a Bachelor's thesis.

Complementary competence studies support individual study paths and competence and make it possible to deepen or extend your knowledge. You can include in your degree complementary competence studies that are compatible with your professional goals.

Learning is made relevant to workplace development and the your personal goals. Learning outcomes have been defined for the modules on the basis of workplace needs as well as the future needs emerging from studies and surveys.

In practice, credits are attained when you complete study units that are part of the module or engage in projects in which the corresponding competence area is develop (see picture 2). Credits can also be gained through recognition of prior learning with accreditation, demonstration of prior learning or work-based learning, for example.



Picture 2. Accumulation of studies in the degree structure

Degree Requirements

The learning outcomes of the core competence modules describe the required competence that the you must achieve in order to complete the degree. The degree requirements include language studies, which are to be completed, according to instructions, as part of the core competence studies. Finnish Students are also required to demonstrate their proficiency in both national languages (Finnish and Swedish) and in English, as part of the core competence of the degree. In addition, Finnish students must obtain the proficiency in the second national language (Swedish or Finnish) required of personnel in the service of public bodies. Apart from the core competence modules, you must complete complementary studies to reach the required scope of the degree.

The degree includes placements (45 cr) and a thesis (15 cr).

1) Customer Work in Social and Correctional Services (30 cr)

The aim of the study units in this module is to develop the students' professional interactive skills based on the needs and starting points of working with customers in the correctional services sector.

After completing the module, students are able to reflect on their own activities and interactive skills in relation to working with customers. They understand the needs of different customer groups and have mastered the basic premises of case management and work aiming to prevent exclusion.

The students are capable of creating professional and dialogical interactive and cooperative relationships and have the capacity to support and guide customers and groups of customers.

The student is able to design, carry out and assess customer-oriented, inclusive, change-focused service processes, applying various methods of social work.

2) Service and Correctional Services System (30 cr)

The study units in this module aim to acquaint students with the operating environments of social and correctional services, the service and correctional services systems as well as the legislation, norms and principles guiding activities.

After completing the module, the students master the system of penalties and its various modes of operation, and are able to reflect upon its effects on individuals and society. The students are able to interpret and apply the legislation that guides work in the correctional services sector. They are able to perceive and analyse threats and risks to the operations of organisations and have mastered security measures. The students are able to define an organisation's security needs.

The student is familiar with social security and well-being systems. The student is able to guide customers to the appropriate services and coordinate services on a needs basis in multidisciplinary networks. The student can carry out customer-oriented assessment and documentation in customer work.

The student is able to communicate both verbally and in writing as well as in English in professional contexts. The student knows how to develop their language skills.

3) Management and Development of Correctional Services (30 cr)

Having completed the module students are able to act responsibly as a team member and as a supervisor in the operating environments of social and correctional services. Students are able to develop their organisation and work community. They can apply the practices of human resources management and labour legislation in accordance with the ethical principles of their professional field. Students can develop their abilities to act as an entrepreneur and plan cost-effective business operation. They can act in a customer-oriented and entrepreneurial manner.

The students are able to communicate orally and in writing, and communicate using the other national language in professional contexts and achieves the level of competence in the other national language required from public servants. They are able to improve their language skills.

4) Influencing Criminality (30 cr)

The aim of the module's study units is to learn to master the paradigms that guide rehabilitative work and to apply various operating methods and models that can help to prevent repeat offences and exclusion.

After completing the module, the students are able to analyse theories explaining criminality. The students master various work forms of rehabilitative work, and they understand the paradigms that guide rehabilitative work.

The students are able to recognize and analyse structures and processes that cause and maintain criminality and exclusion, and they are able to influence them. The students are able to examine social structure and social change from the perspective of welfare and safety.

The students learn to assess their own actions in terms of the operating modes and methods of professional work.

5) Expert in Development and Workplace Innovation (30 cr)

The aim of the module is to strengthen the student's sense of joint agency and ability to share their competence, develop their study and learning skills, and support the development of their competence identity. The module helps the student formulate a holistic approach to their future. At the start of their studies, the student will acquire the tools, communication skills, and project work-related competences necessary for their higher education studies and the Learning by Developing process. During the module, the student will develop their competence in research-based development work. The module includes a thesis.

After completing the module, the student will be able to assess and develop their competence while taking into account the competence needs and development prospects of working life. They will also be able to assess the professional opportunities that are available to them. The student will be able to articulate their skills and be more prepared for the job application process. The student will be better prepared to look after their well-being and resilience. The student will be able to reference professionally researched information in their communications in different communication situations. They will be able to identify development targets in working life and plan, implement and evaluate development projects in collaboration with various working life actors. They will know how to use appropriate, research-based development methods and project management techniques. They will be able to critically assess information, the results of development work, and their own activities. The student will be able to seek creative and innovative solutions to development challenges in the workplace. The student will also know how to report on the process and results of their research-based development work in their thesis.

Degree Requirements Regarding Complementary Competence

The rest of the degree (60 cr) consists of complementary competence studies. Degree certificate in Social Services is granted only if the student has completed at least 30 credits (ECTS) complementary competence studies related to Social Services (total amount of complementary competence studies is 60 credits).

Flexible Possibilities for Completing Attainments and Specialising

At Laurea, you have flexible possibilities of building up the competence specified in the modules' learning outcomes. Among other things, you can

- choose core competence studies offered by Laurea's various campuses provided that there is space in the group,
- select complementary competence modules that support your professional goals in Laurea's various campuses,
- select English complementary competence studies from Laurea's offer of English education, even if you are studying in an Finnish education,
- select online studies that give you more flexibility in your study schedules,
- develop your competence by taking part in projects,
- exhibit your proficiency in demonstrations or utilize work-based learning,
- choose options available for cross-studies as well as
- take part in student exchange.

The study unit and project implementation plan include the actual start and end dates of the studies, the implementing campus, language of instruction, registration period, number of credits, learning outcomes, evaluation criteria and methods, items to be evaluated, implementation methods, degree workload and mandatory literature. The learning outcomes, schedule and evaluation criteria are reviewed together with the students at the beginning of each study unit.

You can target your competence by means of selecting complementary competence modules, participating in various projects and when choosing your placements and the theme of your thesis. Career guidance will be provided to support your study path.

Assessment of Learning and Competence in the Bachelor's Degree Programme

In the curriculum, the learning outcomes are described as the learner's actions, so that the development of competence can be assessed with reference to the set goals. Competence is identified as knowledge, skills and values related competence as well as experiential competence that includes the competence of an individual and a community. The competence descriptions in the curriculum draw on Bloom's taxonomy, where the development of competence is described at six different levels: knowledge, comprehension, application, analysis, synthesis and evaluation/creativity.

Assessment of Studies

Study units and projects are graded as follows:

5 (Excellent),
4 (Good),
3 (Good),
2 (Satisfactory),
1 (Satisfactory) and
Fail (HYL).

Some study units or parts can also be graded simply as Pass (HYV) or Fail (HYL).

Framework for Assessment

The competences are always assessed by using the criteria in force at the time in question. The criteria can be changed during the studies. The basis of assessment described below were valid when the curriculum for your degree programme was published.

The assessment framework includes two requirement levels, Level I and Level II (see table 1 and 2). A requirement level, outlining the criteria used for assessment, has been defined for each study unit. The specific competence criteria (according to level I or II) are described in the implementation plan of each study unit/project. The assessment criteria serve as benchmarks for assessing the qualitative achievement of the learning outcomes indicated in the curriculum.

Within the requirement levels of the assessment framework, the required competence is described for levels Pass/1, 3 and 5. The competence acquired by students is assessed comprehensively. For good competence (3), it is required to also meet the criteria for satisfactory competence. Similarly, for excellent competence (5), the assessment criteria for satisfactory and good competence must also be met. If the criteria for good competence are not fully met but all the criteria for a satisfactory level are met, the grade will be 2. Similarly, your grade will be 4 if the competence level is good but still not excellent in all respects.

Table 1. Framework for assessing the competence of bachelor students: requirement level I

	Professional knowledge basis, information searching and reporting	Professional practice and workplace development	Assessed as applicable: teamwork skills, leadership and responsibility
Grade 5 The student is able to...	<ul style="list-style-type: none"> • use professional concepts extensively • compare and choose relevant information • report and communicate in a professional manner 	<ul style="list-style-type: none"> • work independently, using the skills and methods learned • take responsibility for interaction with customers and/or co-operation partners and for responding to their needs • anticipate their need for guidance 	<ul style="list-style-type: none"> • promote the team's work and team spirit • manage their time appropriately, completing the agreed tasks at the required quality level • work responsibly, applying the skills and methods learned • plan and evaluate their work, taking safety and/or ethical aspects into consideration
Grade 3 The student is able to...	<ul style="list-style-type: none"> • use professional concepts in a consistent manner when explaining various work practices and situations • gather information and use their knowledge basis report in the agreed manner 	<ul style="list-style-type: none"> • work using the skills and methods learned • engage in professional interaction with customers and/or co-operation partners and identify their needs • take part in guidance and utilise it 	<ul style="list-style-type: none"> • engage in goal-oriented work in a team • plan and manage the progress of their work and use of time • detect safety-related risks • justify their actions in accordance with the professional code of conduct
Grade pass/1 The student is able to....	<ul style="list-style-type: none"> • use essential professional concepts when explaining various work practices and situations • search for information in different sources • report 	<ul style="list-style-type: none"> • work under guidance using the skills and methods learned • interact with customers and/or co-operation partners • receive guidance 	<ul style="list-style-type: none"> • work as a member of a team • plan the progress of their work and use of time under guidance • work safely and in accordance with the professional code of conduct • follow the provided instructions and rules

Table 2. Framework for assessing the competence of bachelor students: requirement level II

	Professional knowledge basis, information searching and reporting	Professional practice and workplace development	Assessed as applicable: teamwork skills, leadership and responsibility
Grade 5 The student is able to...	<ul style="list-style-type: none"> analyse the acquired information, draw conclusions and combine theoretical knowledge with experiential knowledge 	<ul style="list-style-type: none"> evaluate the applicability of produced knowledge, skill or idea to other contexts as well as their impact anticipate needs of customers and/or co-operation partners 	<ul style="list-style-type: none"> evaluate and develop the team's entrepreneurial and responsible approach to work evaluate the possibilities for utilising competence and plan their personal development and development of the team
Grade 3 The student is able to...	<ul style="list-style-type: none"> critically evaluate information and justify their actions with science-based knowledge 	<ul style="list-style-type: none"> propose creative solutions at work promote professional co-operation and enhance customer and partner relationships 	<ul style="list-style-type: none"> act in a manner that promotes the team's entrepreneurial and responsible approach to work describe the development of their competence in relation to the learning outcomes
Grade pass/1 The student is able to...	<ul style="list-style-type: none"> use professional concepts in a consistent manner and demonstrate their familiarity with the knowledge basis report and communicate in a professional manner 	<ul style="list-style-type: none"> act independently taking into account the operating environment take responsibility for interaction with customers and/or co-operation partners and for responding to their needs 	<ul style="list-style-type: none"> describe the significance of their actions for successful co-operation describe their competence in relation to the learning outcomes

The following criteria apply to all studies except the thesis, which is assessed according to a set of specific criteria expressed in the thesis guidelines. The assessment criteria are based on the European (EQF) and national (NQF) qualifications frameworks.

The assessments draw on the students' self and peer assessments and the assessments of employer representatives. Assessment helps you to monitor the development of your competence and the achievement of your personal goals in relation to the competence requirements set for the degree.

International Comparability of the Degree

The level of the degree corresponds with level 6 of the National Qualifications Framework (NQF) and level 6 of the European Qualifications Framework (EQF).

In the curriculum, the learning outcomes of a study unit are described for level 3, good skills, on the assessment scale (1-5).

Curriculum Development

The curriculum is developed by using evaluation, monitoring and feedback data. Feedback is received from students, personnel and workplaces for the development of the curriculum. In addition, the curriculum is regularly assessed using predefined assessment criteria. The development of the curriculum also takes into consideration the changing needs of society.

Changes may occur in the study units and implementation modes of the modules. Especially the offering of the complementary competence modules is constantly under development to match the requirements of the working life and thus the offering may change during the studies.

In parallel to curriculum changes, Laurea also works to continuously develop the study implementations. Self-assessment of studies by means of education quality criteria is incorporated in the planning of each implementation.