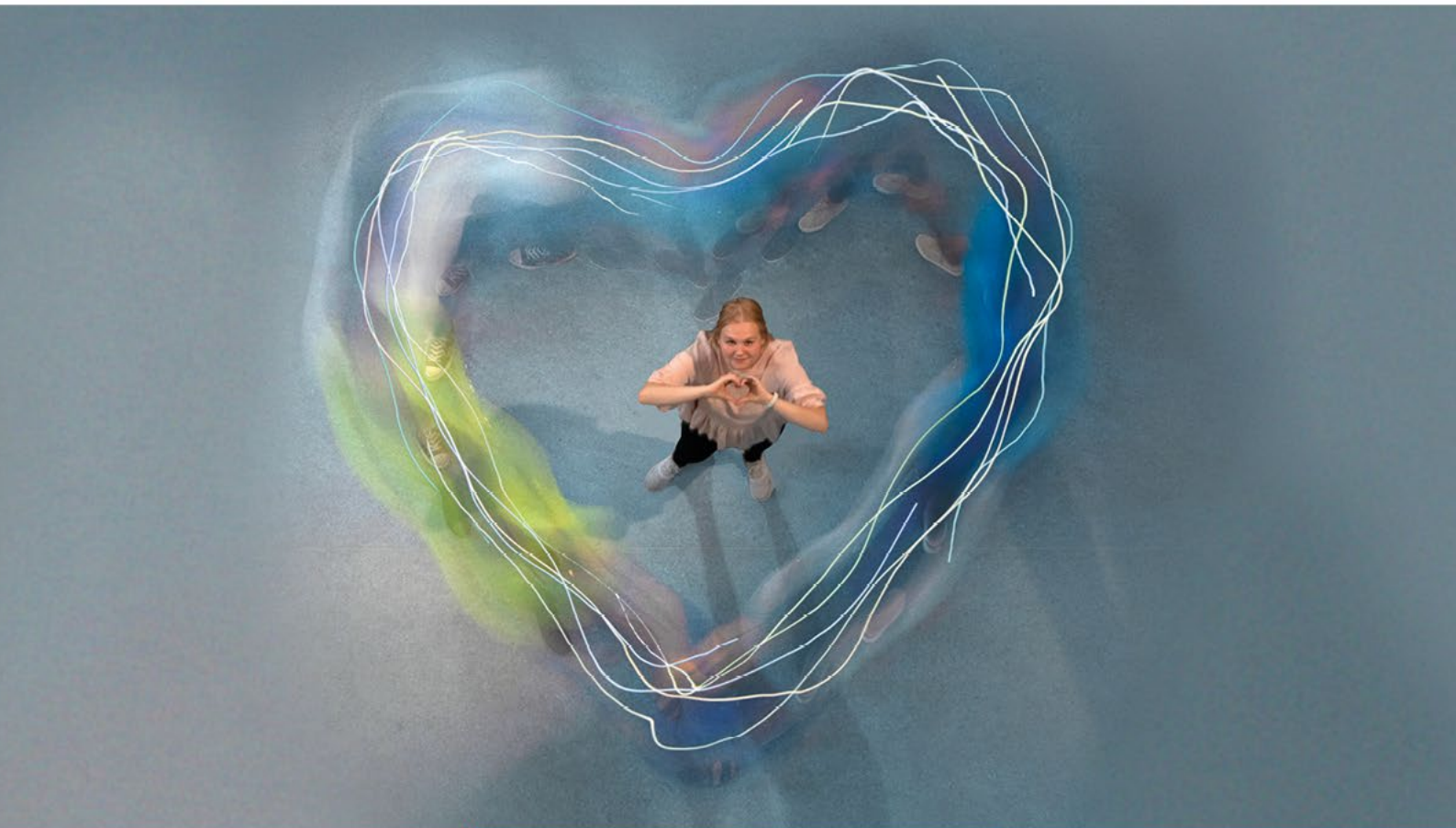




AMMATTIKORKEAKOULU

University of Applied Sciences



Welcome to Study Social Services

Information on Education, Degree Structure and Competence Assessment

Groups: SSV224SN, SSG224SA, SSF224SA, SSB224SA, SSD224SA, SSVOPS24

Content

Laurea's Mission	3
Competence Development	3
Learning by Developing (LbD)	4
Degree Structure	5
Scope and Extent of the Degree	5
Degree Structure	5
Degree Requirements	6
Degree Requirements Regarding Complementary Competence	8
Flexible Possibilities for Completing Attainments and Specialising	8
Assessment of Learning and Competence in the Bachelor's Degree Programme	9
International Comparability of the Degree	12
Curriculum Development	12

The purpose of this attachment to the curriculum is to provide you with basic information on the operating methods, degree structure and requirements as well as the assessment of competence and learning at Laurea and in the education. If you have additional questions, please contact your personal tutor or peer tutor.

Wishing you success in your studies!

*Katri Ojasalo
Vice President (Education)*

Laurea's Mission

Laurea is a student-centred, international, inspiring and innovative university of applied sciences. Our mission is to educate, research, develop and innovate. In our activities we apply the action model of Learning by Developing (LbD).

As a student you will encounter authentic workplace actors and your competence will be challenged during their studies. A student graduating from Laurea will be able to act in new situations, anticipate future trends, develop new operating models and examine the world with open eyes. Laurea's mission is to be an internationally networked university of applied sciences with an operating method that creates links between learning and the working life. This way, new competence will be produced and service innovations generated.

Competence Development

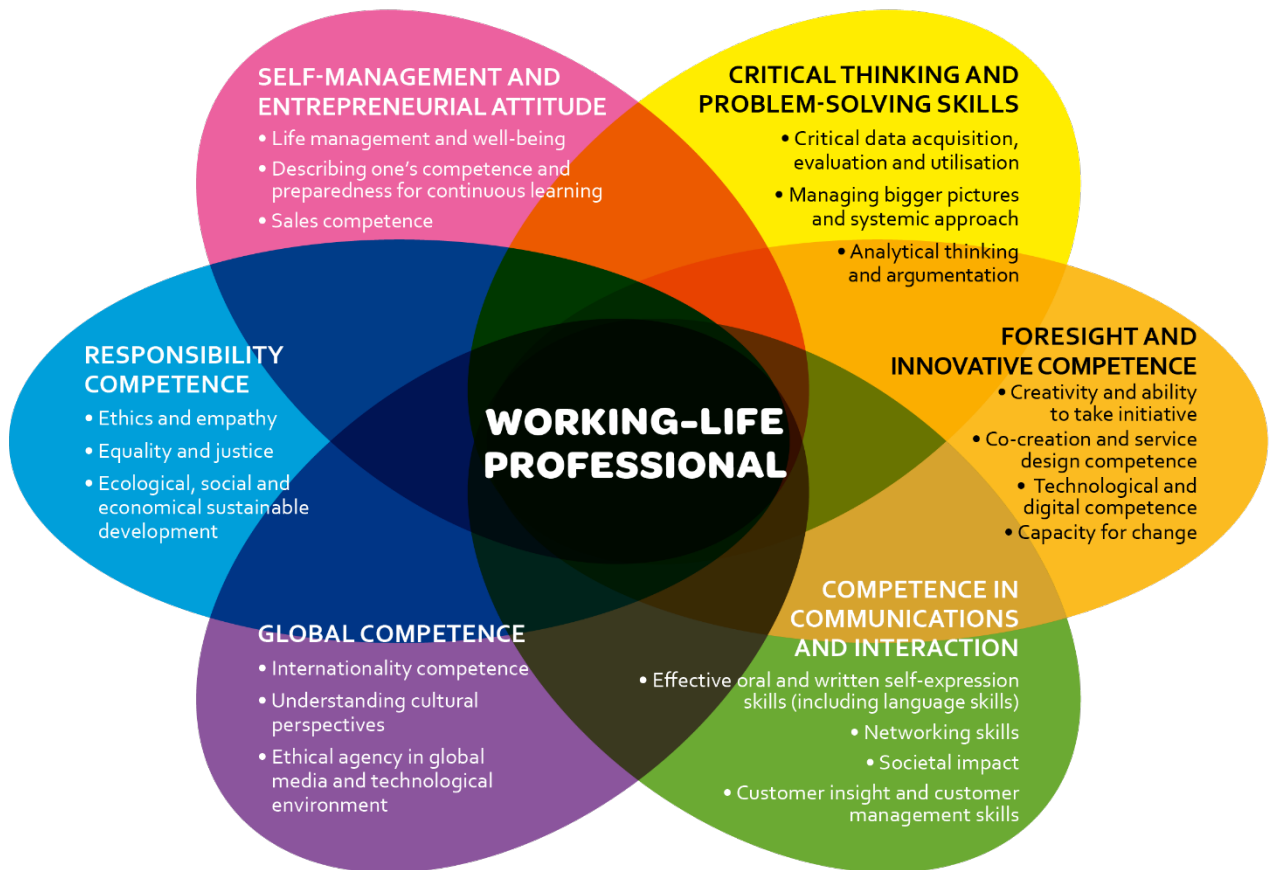
At Laurea our focus is on the student, which emphasize your freedom and responsibility. You are offered an opportunity to develop your competence to meet your own professional goals. Freedom means that the learning outcomes may be achieved through different modes of studying. Responsibility means an active approach to studying, responsibility for your own choices and a constructive and motivated attitude towards doing things together. Laurea's staff is responsible for supporting and guiding your professional growth.

Internationality at Laurea means numerous opportunities for being active in various multicultural settings, developing your language skills, going on student exchanges and taking part in international research and development (R&D) projects.

Student entrepreneurship is supported and entrepreneurship is visible in Laurea's activities not only as an entrepreneurial attitude and cooperation with companies but also as concrete new businesses that our students may set up even before completing their studies.

Laurea produces experts for the future who can develop their own work, are professionally committed and have capabilities for serving in expert tasks in their own fields.

The education aims for an extensive and strong professional competence. Workplace driven projects also develop generic working life competences (see picture 1). The graduates will have capabilities for following and promoting the development of their professional fields and for continuous improvement of their personal professional competence. The education imparts the students adequate communication and linguistic skills for tasks in their fields as well as for international activities and cooperation.



Picture 1. Generic working-life competences common for all degree programmes.

Learning by Developing (LbD)

Laurea's inspiring and innovative learning environments are based on the model of Learning by Developing. The idea of Learning by Developing is built around authentic encounters with the working life. The ensuing cooperation is based on trust and creativity.

As a student you will learn to identify targets for workplace and competence development, to create new solutions, products and operating models and to develop your own action in observance of changing workplace requirements. The typical characteristics of LbD include authenticity, partnership, experiential nature, creativity and a research-oriented approach.

Learning by Developing combines learning that produces competence with creativity through various research and development projects. Learning builds on new opportunities that open up as the project

progresses. The required competence is accumulated through practical activities in various workshops.

Degree Structure

Scope and Extent of the Degree

The scope of a Bachelor's degree in Social Services is 210 credits. It takes on average 3.5 years to complete.

In line with the international ECTS standard, one credit corresponds with 26.7 hours of work for an average student. In order to graduate in the targeted time, you should earn an average of 30 credits per semester.

Degree Structure

The degree studies at Laurea consists of core competence and complementary competence modules. The modules comprise competence areas that are part of the degree.

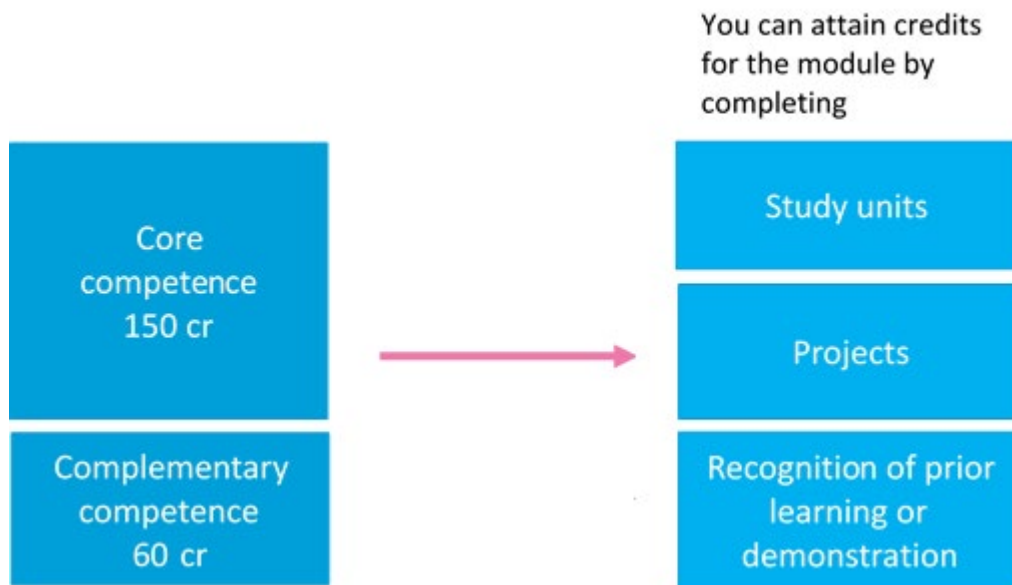
Core competence modules impart competence that is part of the degree's compulsory requirements. The scope of core competence modules is 30 credits. The modules contain the following types of studies: basic studies, professional studies, practical studies and a Bachelor's thesis.

Complementary competence modules support individual study paths and competence and make it possible to deepen or extend your knowledge. You can include in your degree complementary competence modules that are compatible with your professional goals. The compatibility of the elective studies with your degree will be subject to prior agreement with your teacher tutor.

Learning is made relevant to workplace development and the your personal goals. Learning outcomes have been defined for the modules on the basis of workplace needs as well as the future needs emerging from studies and surveys.

In practice, credits are attained when you complete study units that are part of the module or engage in projects in which the corresponding competence area is develop (see picture 2). Credits can also be gained through recognition of prior learning or demonstrations.

Studies can be implemented either in Finnish or in English. The language of the implementation is decided for each semester and is visible in the study unit or project implementation plan.



Picture 2. Accumulation of studies in the degree structure

Degree Requirements

The learning outcomes of the core competence modules describe the required competence that you must achieve in order to complete the degree. The degree requirements include language studies, which are to be completed, according to instructions, as part of the core competence studies. Finnish Students are also required to demonstrate their proficiency in both national languages (Finnish and Swedish) and in English, as part of the core competence of the degree. In addition, Finnish students must obtain the proficiency in the second national language (Swedish or Finnish) required of personnel in the service of public bodies. Apart from the core competence modules, you must complete complementary studies to reach the required scope of the degree.

The degree includes placements (45 cr) and a thesis (15 cr).

1) Working with Clients in Social Services (30 cr)

The module develops interaction skills needed to support the client in various life stages and situations. After completing the module, students are able to reflect on their own actions and interactive skills in relation to working with clients. The students are able to analyse the needs of clients from diverse backgrounds and life situations. They have mastered the basics of guidance and the prevention of exclusion. The students can establish professional and dialogical interaction and collaborative networks as well as being able to support and guide both individual clients and client groups. The students are able to communicate in professional contexts in English both orally and in writing. They are able to improve their language skills.

2) Service Systems, Inclusion and Developing a Better Society (30 cr)

In this module, the students develop their capabilities in examining and analysing social and structural factors affecting work and service needs in social services. They also develop their skills in applying the methods of influencing society.

After completing the module, the students are able to analyse service systems supporting welfare and social security and are familiar with the relevant legislation. They recognize global and social trends and needs for change. They have the capacity to participate in the work to influence society in cooperation with customers and other actors. The students are capable of identifying elements that contribute to social exclusion and poverty in society. The students are able to communicate orally and in writing, and communicate using the other national language in professional contexts. They are able to improve their language skills.

3) Approaches and Methods of Work in Social Services (30 cr)

In this module, the students develop capabilities to apply the theoretical and methodological work approaches in social services in various customer processes.

After completing the module, the students know how to apply and assess different theoretical work orientations, methodological traditions and methods of working with customers. They are able to assess the service needs of different customers and have the capacity to support the inclusion of different customers and the adoption and strengthening of resources. Students are able to act as specialists in social services in multiprofessional working groups and networks and enhance the functioning of the customers' safety networks.

4) Development of Client-Oriented Social Services (30 cr)

The module develops the student's ability to create and maintain a service business. They are able to develop a service business cost-effectively and in line with ethical principles. The student is able to assess the importance of individual services provided to clients and work with clients. The student is able to develop their entrepreneurial capabilities and act in a client-oriented and entrepreneurial manner. They are able to act responsibly as a member of a team or as an immediate supervisor.

5) Expert in Development and Workplace Innovation (30 cr)

The objectives of the module are to develop individual and team learning skills, research and development competences, and to support career development and work identity.

At the beginning of their studies, students acquire the tools and development-based learning practices required in higher education. After completing the module, students will have the ability to work responsibly both independently and as team members. They are able to assess and develop themselves as learners and identify development targets in the workplace.

Students are able to plan, implement and evaluate a project in cooperation with various professional networks in the workplace. They can use appropriate research methods, as well as research and project work techniques. Students are able to identify creative and innovative solutions for workplace development challenges.

Students are able to report the results of their development work using a research-based writing

style. Students are able to plan their studies, personal development and career, taking into account the development prospects of their own field.

Degree Requirements Regarding Complementary Competence

The rest of the degree (60 cr) consists of complementary competence studies. Degree certificate in Social Services is granted only if the student has completed at least 30 credits (ECTS) complementary competence studies related to Social Services (total amount of complementary competence studies is 60 credits).

At Laurea we encourage you to take part in voluntary work during your studies. The objective is that everyone develops their professional competences during their studies by participating in voluntary work in a role they choose themselves. You can fit voluntary work into any stage of your studies and gain credits.

Flexible Possibilities for Completing Attainments and Specialising

At Laurea, you have flexible possibilities of building up the competence specified in the modules' learning outcomes. Among other things, you can

- choose core competence studies offered by Laurea's various campuses provided that there is space in the group,
- select complementary competence modules that support your professional goals in Laurea's various campuses,
- select English complementary competence studies from Laurea's offer of English education, even if you are studying in an Finnish education,
- select online studies that give you more flexibility in your study schedules,
- develop your competence by taking part in projects,
- exhibit your proficiency in demonstrations or utilize work-based learning,
- choose options available for cross-studies, which are offered, for example, by Laurea, Haaga-Helia and Metropolia (3AMK) as well as
- take part in student exchange.

The study unit and project implementation plan include the actual start and end dates of the studies, the implementing campus, language of instruction, registration period, number of credits, learning outcomes, evaluation criteria and methods, items to be evaluated, implementation methods, degree workload and mandatory literature. The learning outcomes, schedule and evaluation criteria are reviewed together with the students at the beginning of each study unit.

You can target your competence by means of selecting complementary competence modules, participating in various projects and when choosing your placements and the theme of your thesis. Career guidance will be provided to support your study path.

Assessment of Learning and Competence in the Bachelor's Degree Programme

In the curriculum, the learning outcomes are described as the learner's actions, so that the development of competence can be assessed with reference to the set goals. Competence is identified as knowledge, skills and values related competence as well as experiential competence that includes the competence of an individual and a community. The competence descriptions in the curriculum draw on Bloom's taxonomy, where the development of competence is described at six different levels: knowledge, comprehension, application, analysis, synthesis and evaluation/creativity.

Assessment of Studies

Study units and projects are graded as follows:

5 (Excellent),
4 (Good),
3 (Good),
2 (Satisfactory),
1 (Satisfactory) and
Fail (HYL).

Some study units or parts can also be graded simply as Pass (HYV) or Fail (HYL).

Framework for Assessment

The competences are always assessed by using the criteria in force at the time in question. The criteria can be changed during the studies. The basis of assessment described below were valid when the curriculum for your degree programme was published.

The assessment framework includes two requirement levels, Level I and Level II (see table 1 and 2). A requirement level, outlining the criteria used for assessment, has been defined for each study unit. The specific competence criteria (according to level I or II) are described in the implementation plan of each study unit/project. The assessment criteria serve as benchmarks for assessing the qualitative achievement of the learning outcomes indicated in the curriculum.

Within the requirement levels of the assessment framework, the required competence is described for levels Pass/1, 3 and 5. The competence acquired by students is assessed comprehensively. For good competence (3), it is required to also meet the criteria for satisfactory competence. Similarly, for excellent competence (5), the assessment criteria for satisfactory and good competence must also be met. If the criteria for good competence are not fully met but all the criteria for a satisfactory level are met, the grade will be 2. Similarly, your grade will be 4 if the competence level is good but still not excellent in all respects.

The following criteria apply to all studies except the thesis, which is assessed according to a set of specific criteria expressed in the thesis guidelines. The assessment criteria are based on the European (EQF) and national (NQF) qualifications frameworks.

The assessments draw on the students' self and peer assessments and the assessments of employer representatives. Assessment helps you to monitor the development of your competence and the achievement of your personal goals in relation to the competence requirements set for the degree.

Table 1. Framework for assessing the competence of bachelor students: requirement level I

	Professional knowledge basis, information searching and reporting	Professional practice and workplace development	Assessed as applicable: teamwork skills, leadership and responsibility
Grade 5 The student is able to...	<ul style="list-style-type: none"> • use professional concepts extensively • compare and choose relevant information • report and communicate in a professional manner 	<ul style="list-style-type: none"> • work independently, using the skills and methods learned • take responsibility for interaction with customers and/or co-operation partners and for responding to their needs • anticipate their need for guidance 	<ul style="list-style-type: none"> • promote the team's work and team spirit • manage their time appropriately, completing the agreed tasks at the required quality level • work responsibly, applying the skills and methods learned • plan and evaluate their work, taking safety and/or ethical aspects into consideration
Grade 3 The student is able to...	<ul style="list-style-type: none"> • use professional concepts in a consistent manner when explaining various work practices and situations • gather information and use their knowledge basis report in the agreed manner 	<ul style="list-style-type: none"> • work using the skills and methods learned • engage in professional interaction with customers and/or co-operation partners and identify their needs • take part in guidance and utilise it 	<ul style="list-style-type: none"> • engage in goal-oriented work in a team • plan and manage the progress of their work and use of time • detect safety-related risks • justify their actions in accordance with the professional code of conduct
Grade pass/1 The student is able to....	<ul style="list-style-type: none"> • use essential professional concepts when explaining various work practices and situations • search for information in different sources • report 	<ul style="list-style-type: none"> • work under guidance using the skills and methods learned • interact with customers and/or co-operation partners • receive guidance 	<ul style="list-style-type: none"> • work as a member of a team • plan the progress of their work and use of time under guidance • work safely and in accordance with the professional code of conduct • follow the provided instructions and rules

Table 2. Framework for assessing the competence of bachelor students: requirement level II

	Professional knowledge basis, information searching and reporting	Professional practice and workplace development	Assessed as applicable: teamwork skills, leadership and responsibility
Grade 5 The student is able to...	<ul style="list-style-type: none"> analyse the acquired information, draw conclusions and combine theoretical knowledge with experiential knowledge 	<ul style="list-style-type: none"> evaluate the applicability of produced knowledge, skill or idea to other contexts as well as their impact anticipate needs of customers and/or co-operation partners 	<ul style="list-style-type: none"> evaluate and develop the team's entrepreneurial and responsible approach to work evaluate the possibilities for utilising competence and plan their personal development and development of the team
Grade 3 The student is able to...	<ul style="list-style-type: none"> critically evaluate information and justify their actions with science-based knowledge 	<ul style="list-style-type: none"> propose creative solutions at work promote professional co-operation and enhance customer and partner relationships 	<ul style="list-style-type: none"> act in a manner that promotes the team's entrepreneurial and responsible approach to work describe the development of their competence in relation to the learning outcomes
Grade pass/1 The student is able to...	<ul style="list-style-type: none"> use professional concepts in a consistent manner and demonstrate their familiarity with the knowledge basis report and communicate in a professional manner 	<ul style="list-style-type: none"> act independently taking into account the operating environment take responsibility for interaction with customers and/or co-operation partners and for responding to their needs 	<ul style="list-style-type: none"> describe the significance of their actions for successful co-operation describe their competence in relation to the learning outcomes

International Comparability of the Degree

The level of the degree corresponds with level 6 of the National Qualifications Framework (NQF) and level 6 of the European Qualifications Framework (EQF).

In the curriculum, the learning outcomes of a study unit are described for level 3, good skills, on the assessment scale (1-5).

Curriculum Development

The curriculum is developed by using evaluation, monitoring and feedback data. Feedback is received from students, personnel and workplaces for the development of the curriculum. In addition, the curriculum is regularly assessed using predefined assessment criteria. The development of the curriculum also takes into consideration the changing needs of society.

Changes may occur in the study units and implementation modes of the modules. Especially the offering of the complementary competence modules is constantly under development to match the requirements of the working life and thus the offering may change during the studies.

In parallel to curriculum changes, Laurea also works to continuously develop the study implementations. Self-assessment of studies by means of education quality criteria is incorporated in the planning of each implementation.